

# Swivel castor with total lock SMMT 150 PEK

Extra Heavy Duty Series SMM - Wheel PE

-40 °C - +80 °C

+++  
swivels easily

+++  
wear resistant

+++  
shock proof

+++  
floor protective

+++  
weather proof

## Wheel



Casted high quality nylon wheel

## Fork



Solid steel welded construction, with axial grooved ball bearing DIN 711 and tapered roller bearing DIN 720, very strong integrated Kingpin, with grease nipple, sealed with 2 o-rings finish: alu-grey painted on request: zinc-plated and passivated (chrom VI-free)

Swivel castor with total lock Wheel-Ø A x width B mm: 150x40+40

Load Capacity kg: 2000

Load capacity tested according to EN 12530 and EN 12527

Overall height H mm: 215

Dimension of top plate TP 140x110 mm:

Hole spacing HS mm: 105x75

Hole-Ø HD mm: 13

Swivel radius SR mm: 146

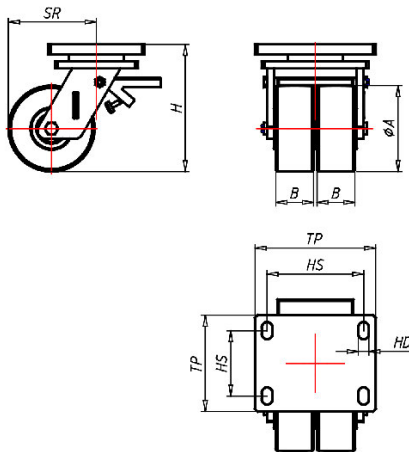
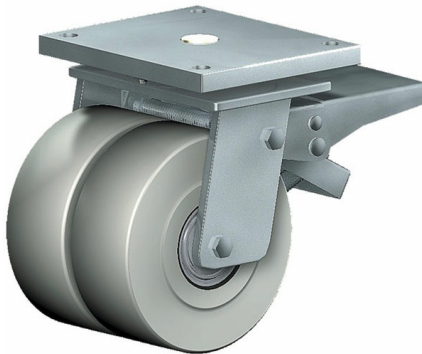
Wheel bearing: Ball bearing

## Advantages

- ✓ for extra heavy loads
- ✓ easy running on smooth floors
- ✓ impact proof
- ✓ high abrasion resistance
- ✓ easy to clean
- ✓ high chemical resistance

©Copyright 2024 Rollenbau GmbH, www.rollenbau.at 01.06.2024

ROLLENBAU



## Applications

- Metal-Technology
- Heavy duty dollies
- Trash container trucks
- Machinery moving dollies
- Workshops
- Racks
- Building-Industry